

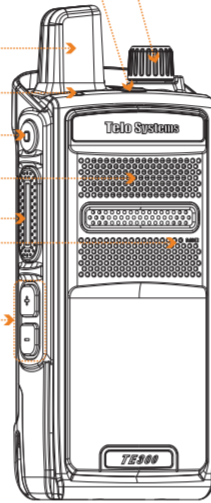
TeloSystems
Bridging Communication Gap
TE300
Quick Start Guide



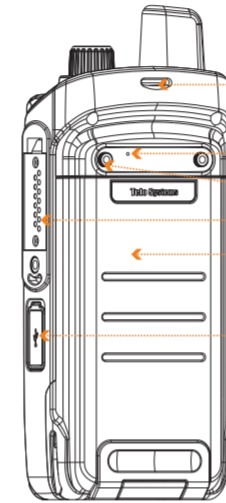
Thanks for choosing our product!
This Quick Start Guide Only applicable to: TE300.
Before using the product, please read the Quick Start Guide to fully benefit from it.

Operating State	Indication
Standby	Green (Blinking)
Low Battery	Red (Blinking)
Charging	Red (Steady)

- PowerButton/ ChannelSwitch
- EmergencyButton
- LTE Antenna
- LED Indicator
- Programmable Button
- Speaker
- PTT Button
- Front Microphone
- Volume Button



- Sling Hole
- Rear Microphone
- Belt Clip Hole
- Accessory Connector
- Battery
- USB Port



Note

- Warranty period is 1 year from date of purchase.
- This product involves constant upgrading and/or improvement, our company reserves the right to change the specifications of software and/or hardware mentioned in this operating guide without any prior notice. The product specifications and information mentioned in the operating guide are for reference only.

Check List

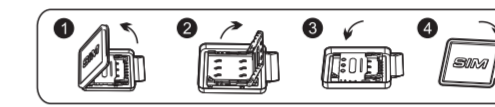
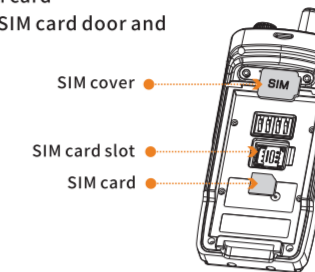
Accessories	Quantity
TE300	1
USB Data Cable	1
Battery	1
Travel Charger	1
Quick Start Guide	1
Belt Clip	1

Notice

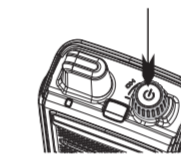
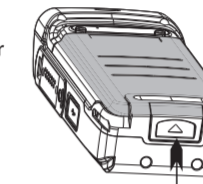
Please check the accessories before you discard the packing material. Please contact your local dealer immediately if there is any missing or damage parts.

Before Use

1. Open the SIM cover
2. Slide and open the SIM card door
3. Insert the SIM card
4. Put back the SIM card door and SIM cover



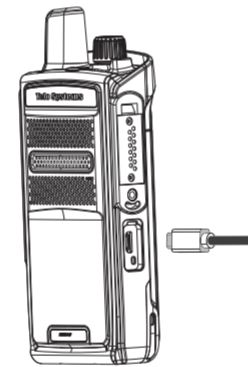
5. Put back the battery cover and press to lock



6. Long press the channel Switch to power on/off the device.

Charging

1. Using Usb Data Cable



Connect the LTE handheld and power adapter using the USB Data Cable. Red light on the LTE handheld indicates battery charging in progress. Green lights on indicates fully charged.

Notice:
Always use Telo Original batteries and chargers. The warranty does not cover damage caused by non-Telo batteries and/or chargers.

WARNING:
DO NOT USE THE ABOVE TWO CHARGING METHODS SIMULTANEOUSLY.

Caution

- Risk of explosion, fire or chemical burns if battery is disassembled, crushed, stricken, trampled, short-circuited, incinerated or exposed to high temperature over 60°C;
- Don't use damaged or weeping battery;
- Keep the battery dry and out of Children's reach;
- Properly dispose of failure batteries in accordance with local regulations.
- Although your device is quite sturdy, it is a complex piece of equipment and can be broken. Avoid dropping, hitting or bending, or sitting on it.
- Make sure the charger/USB port, microSD card/SIM card slot covers are properly seated, with no foreign objects obstructing the seals.
- Do not use the charger/USB port for charging, data transmission, etc. until the phone is completely dry.
- Do not store the device under any circumstance containing electronic erosive material.
- Avoid to pull the device up by holding the antenna or accessories.
- Please power off and unload the battery before cleaning the device.
- Using dry and clean lint-free cloth or hairbrush to keep the device and charger docking port clean.
- Avoid to use any chemical agent including detergent, alcohol, aerosol spray or oil preparations as cleaning solution.
- Dry your device completely after cleaning and before using it again.

FCC Warning

15.19 Labeling requirements.
This device complies with part 15 of the FCC Rules. Operation is subject to the following two conditions:
(1) This device may not cause harmful interference, and
(2) this device must accept any interference received, including interference that may cause undesired operation.

15.21 Information to user.
Any Changes or modifications not expressly approved by the party responsible for compliance could void the user's authority to operate the equipment.

15.105 Information to user.
This equipment has been tested and found to comply with the limits for a Class B digital device, pursuant to Part 15 of the FCC Rules. These limits are designed to provide reasonable protection against harmful interference in a residential installation. This equipment generates uses and can radiate radio frequency energy and, if not installed and used in accordance with the instructions, may cause harmful interference to radio communications. However, there is no guarantee that interference will not occur in a particular installation. If this equipment does cause harmful interference to radio or television reception, which can be determined by turning the equipment off and on, the user is encouraged to try to correct the interference by one or more of the following measures:

- Reorient or relocate the receiving antenna.
- Increase the separation between the equipment and receiver.
- Connect the equipment into an outlet on a circuit different from that to which the receiver is connected.
- Consult the dealer or an experienced radio/TV technician for help.

Specific Absorption Rate (SAR) information:
This product meets the government's requirements for exposure to radio waves. The guidelines are based on standards that were developed by independent scientific organizations through periodic and thorough evaluation of scientific studies. The standards include a substantial safety margin designed to assure the safety of all persons regardless of age or health.

FCC RF Exposure Information and Statement The SAR limit of USA (FCC) is 1.6 W/kg averaged over one gram of tissue. This device was tested for typical body-worn operations with the back of the handset kept 10mm from the body. To maintain compliance with FCC RF exposure requirements, use accessories that maintain a 10mm separation distance between the user's body and the back of the handset. The use of belt clips, holsters and similar accessories should not contain metallic components in its assembly. The use of accessories that do not satisfy these requirements may not comply with FCC RF exposure requirements, and should be avoided.



Telo Systems
Tel:+86-755-86950766
E-mail:support@telosystems.com
Add: 6/F, No.42 Liuxian 1st Road, Bao'an District, Shenzhen, China
www.telosystems.com



材质：120克铜版纸

“页面边界线” 仅代表折痕及纸张大小，无需印刷出来